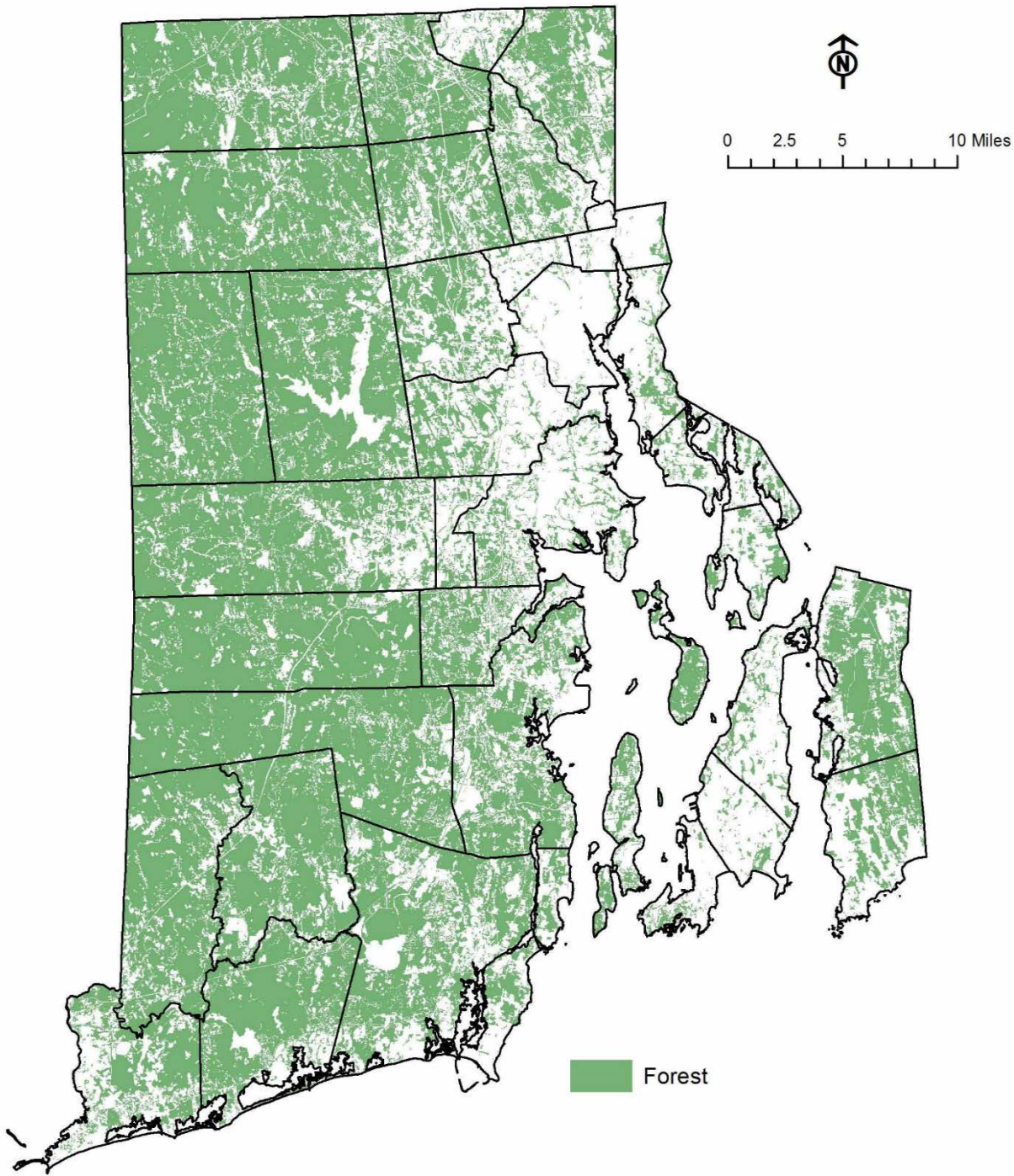


Renewable Energy

Is the Loss of RI Forests Worth It?

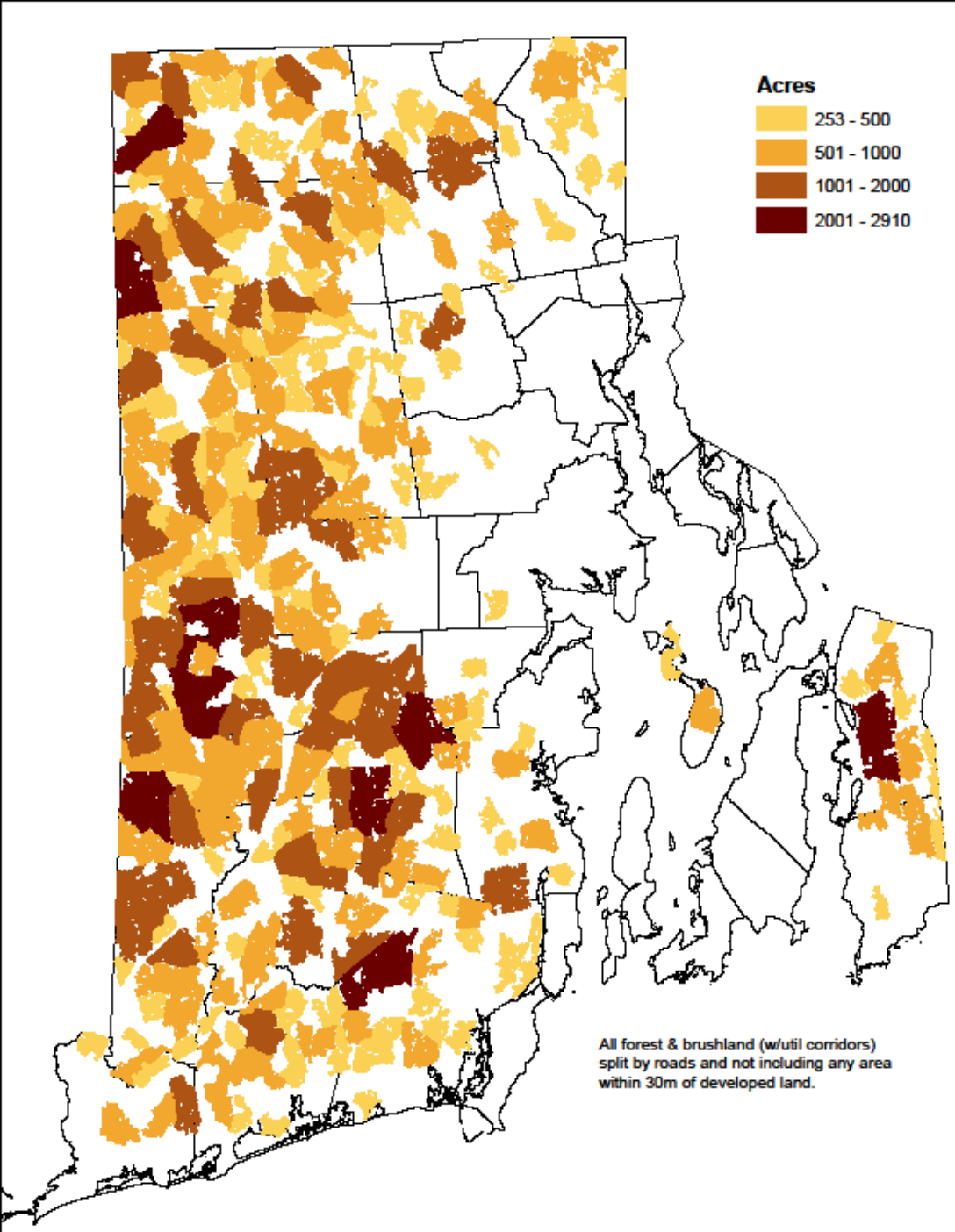
Scott Millar

Grow Smart RI



RI Forest Land

- RI 56% Forested
- 405,000 Forest Acres
- 80% of Parcels 10 Acres or Less
- 70% Unprotected



Large Forested Areas

RI Forest Economic Values

\$710 million Annual Sales Forest
Products

3,325 Jobs: Wood Products



Forests Yield Pristine Water Quality





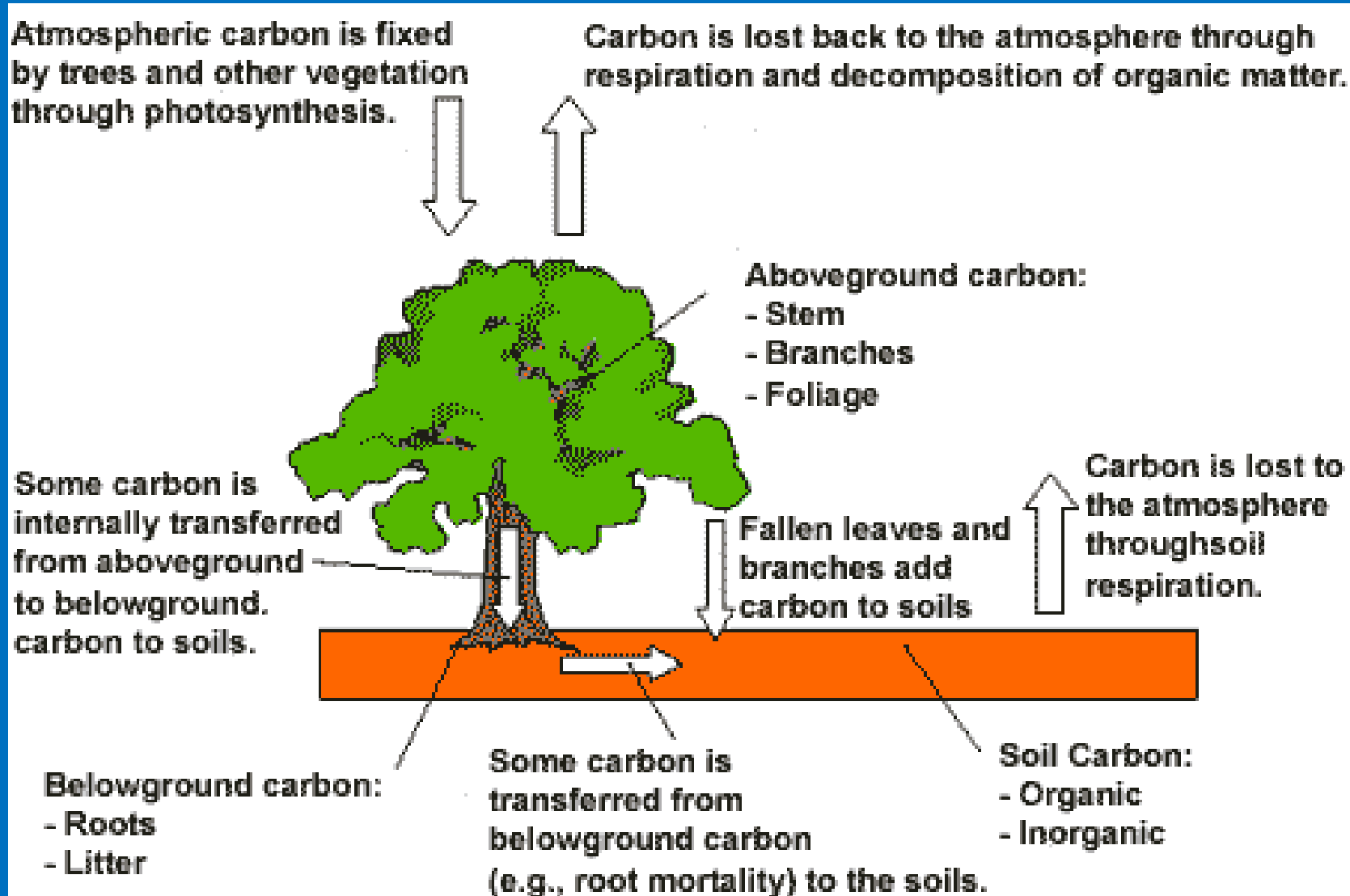
Forest Habitat



Wood Energy

- RI 160% increase in homes heating with wood between 2005-2012
- 135,000 cords burned annually
- Can heat over 35,000 homes

Forests and Climate Change Mitigation



Trees: The **BEST** Economical Climate Change Solution

- 1 acre of RI forest can store 88 tons of carbon
- RI's 400,000 acres of forest can store over 35 million tons of carbon
- 35 million tons of carbon = emissions from 5.9 million cars

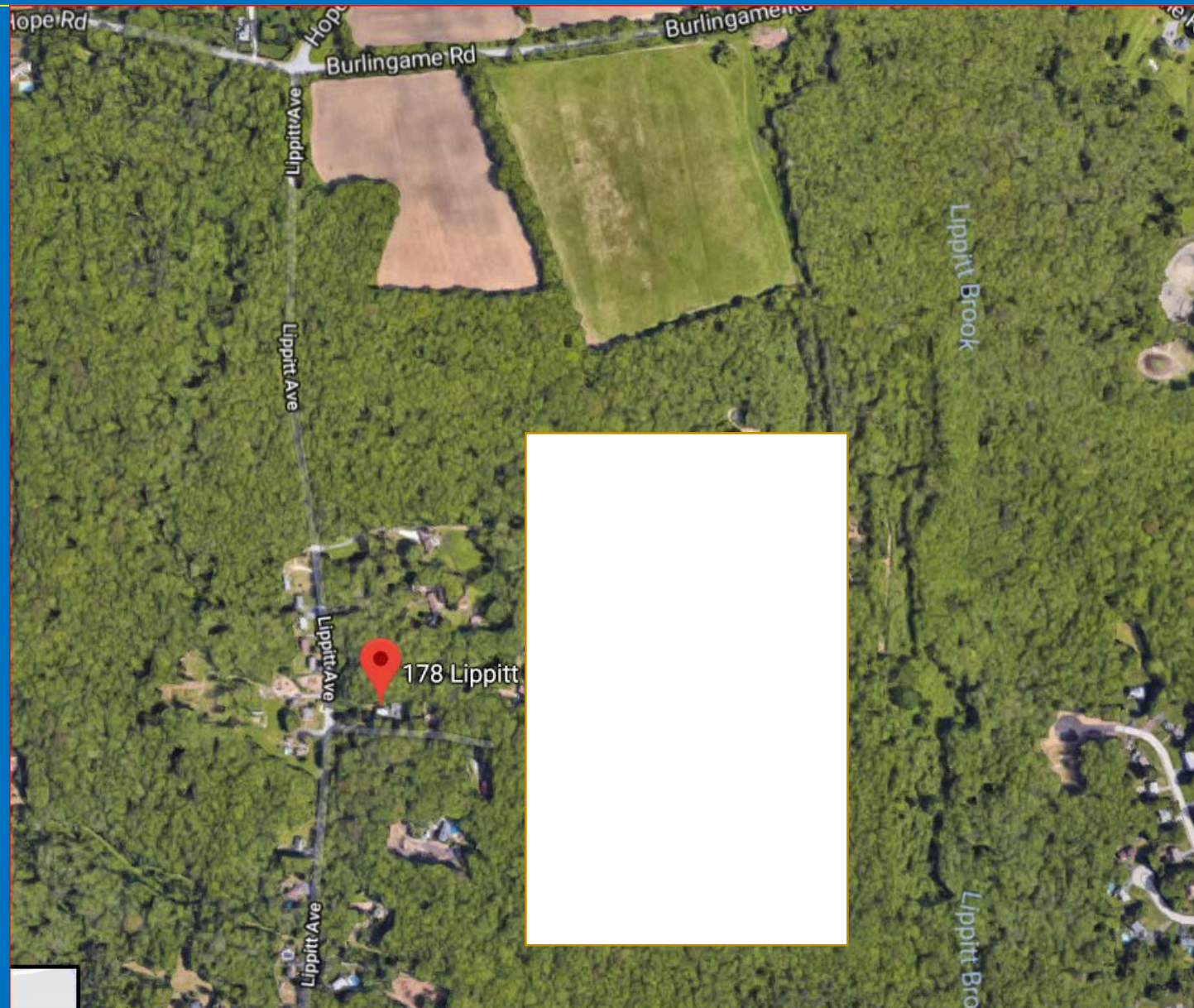
Recommendations to Increase Size and Number of Trees

- Reforestation
- Avoid forest loss
- Good forest management

RI Renewable Energy Status

- Goal: 1000 mega watts (MW) by 2020
- Currently have 230 MW
- Need 770 MW to achieve the 1000 MW goal
- 1 MW solar requires 4-6 acres
- 3,000- 4,600 acres needed for solar = 770 MW

70 Acre Cranston Solar Facility



Cranston Solar Facility cont'd



Cranston Solar Facility cont'd



How Can RI Achieve Renewable Energy Goals and Maintain the Forest?



Solar Siting Alternatives

- Landfills
- Roof tops
- Solar Canopies in Parking Lots
- Gravel Banks
- Brownfields
- Business/Industrial Zoned Lands
- Existing Fields: Not Prime Farm Soils

East Providence Landfill Solar Facility



East Providence Landfill Solar Facility

13,000 solar panels

3.7 MW Currently

9 MW Total 2018

70 acre project



Meeting Street School Roof

- 86.19 Kw Project
- Saves \$9,000 annually



Solar Canopies



Next Steps

- State should provide economic incentives to site solar in preferred locations
- Model solar siting guidance should be prepared
- Towns should revise renewable energy ordinances to follow guidance
- Revise State building code to be solar friendly

Questions?

Farm and Forest Scenic Value

